



iOS7 Accessibility Quickstart

This guide explains the iOS 7 accessibility features and how to use these features on an iPhone, iPad and iPod.

Accessibility Tab

To access the accessibility features within iOS 7: Go to Settings→General→Accessibility.

Vision

VoiceOver

The VoiceOver feature is a screen reader that is built in to iOS devices. To enable VoiceOver go to: **Settings→General→Accessibility→VoiceOver** and swipe on. When activated, Tap once to select an item, Double-Tap to activate the selected item and Swipe three fingers to scroll.

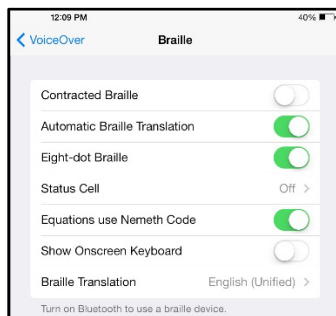


Language & Dialects

To increase or decrease the speaking rate, slide the cursor from left to right (the turtle or the rabbit) until satisfied. To change the language or dialects of a language go to: **Languages & Dialects**→**Default Dialect** and choose a language. You may add a new language by going to: **Languages & Dialects**→**Add New Language** as well as download an Enhanced Quality version.

Braille

Through Bluetooth, iOS7 can translate Braille as well as mathematical equations using Nemeth Code. To enable these features go to: **VoiceOver**→**Braille**→ and **Tap** each option desired.



Rotor

The Rotor wheel can be customized by **Tapping VoiceOver**→**Rotor and Tap** desired options such as Lines, Words, Headings and Links. A new option of iOS7 is the Handwriting option. This allows an individual to draw the letter or word on the screen and it converts this to text.



To Activate the Rotor, Place two fingers on the device and turn them and you get a dial-like set of options for VoiceOver. This allows users to flick up or down to move through only the text you desire.

Customize the Rotor

By customizing the Rotor, an individual can track through the device quicker. A new feature for the Rotor is the Handwriting feature. The feature allows you to write the letter on the screen with your

finger and the device will open a list of applications that start with that letter. Also, when in an application such as Notes the drawings of the letter will convert to text on the screen.

Speak Selection

The Speak Selection feature allows the user to highlight text and then a Button will appear on the screen that will read the highlighted text to the user. To enable this feature go to: **Accessibility**→ **Speak Selection**→ **Tap on**.



Other Features

Zoom

The Zoom feature allows the user to magnify a point on the screen. To enable this feature go to: **Accessibility**→**Zoom**→**Tap on**. To magnify a certain place on the device screen, Double Tap three fingers. Drag three fingers to move the screen magnification and when finished, Double Tap three fingers to quit the feature.

Invert Colors

The Invert Color feature creates a dark background with contrasting text color. To enable this feature go to: **Accessibility**→**Invert Color**→ **Tap on**. You can also add a shortcut for this feature on the Accessibility Shortcut.

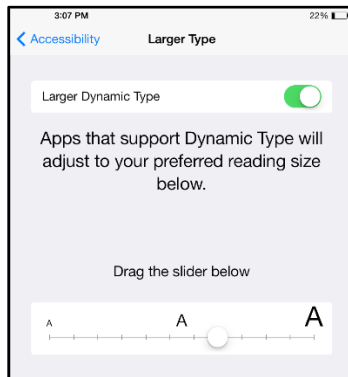


Bold Text

The Bold Text feature creates all text on the device screen to be bolded for better visibility. To enable this feature go to: **Accessibility**→**Bold Text**→**Tap** on (the device will restart).

Larger Type

The Larger Type feature allows the user to customize the preferred text size for Applications that support Large Dynamic Text. This can be enabled by going to: **Accessibility**→**Larger Type**→**Tap** on the Larger Dynamic Text. To establish the preferred size of text, drag a finger across the slider from left to right and an example of text will be provided in a window above to assist in choosing a size.



Increase Contrast

The Increase Contrast feature improves contrast on a background in order to increase the legibility for the user. To enable this feature go to: **Accessibility**→**Increase Contrast**→**Tap** on.

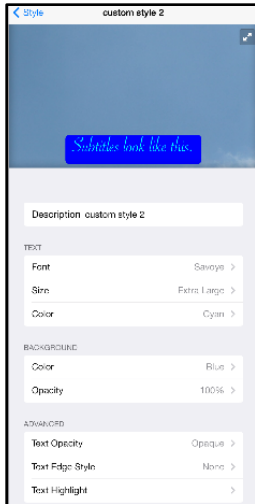
Reduce Motion

Reduce motion is a feature that reduces the parallax effect. When enabled, the motion when opening apps and alerts will gently fade in and out, instead of quickly zoom in and out. To enable this feature go to: **Accessibility**→**Reduce Motion**→**Tap** on.

Hearing

Subtitles & Captioning

To enable the Subtitles and Captioning feature go to: **Accessibility**→**Subtitles &Captioning**→ and **Tap** option. To choose the text style, Tap **Style** and then choose desired option or create a new style which allows you to choose fonts, colors, sizes, text background and text highlights.



Hearing Aids, LED Flash & Mono Audio

Hearing Aids

For Mobile devices such as the Iphone4s-Iphone5s, a user can interface their hearing aids wirelessly through Bluetooth. Additionally, there is a Hearing Aid Mode that improves audio quality with some hearing devices. To enable these features go to: **Accessibility**→**Hearing Aids**→**Tap feature on**.

LED Flash

For Mobile devices, the feature allows the user to be notified of alert by an LED light flash versus a vibration. To enable the LED Flash feature go to: **Accessibility**→**LED Flash for Alerts**→**Tap on**.

Mono Audio

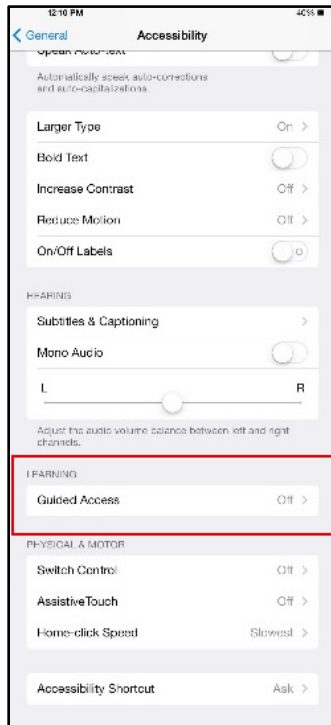
Mono Audio is a feature that allows the user to listen through one headphone in the left or right ear. To enable go to: **Accessibility**→**Mono Audio**→**Tap on**. The user can also listen through both headphones and control the balance between the left and right ear by sliding the left-to-right scale beneath the Mono Audio feature.



Learning

Guided Access

This feature keeps the device in a single app, and allows users to control which features are available in that app. Enable Guided Access by going to **Accessibility**→**Guided Access**→**Tap** the feature and the Accessibility Shortcut as well.

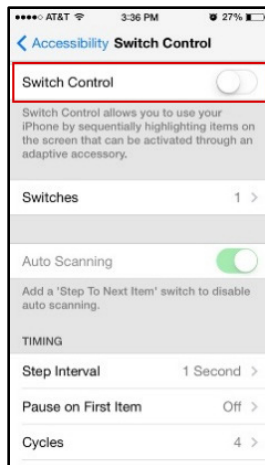


When working in an application, Guided Access assists an individual in controlling what can be accessed such as the volume buttons, the sleep/wake button, and the home button. Users can also disable Motion as well as a section of the screen by drawing a box around that area.

Physical and Motor

Switch Control

Switch Control enables users with fine motor impairments to access the device through one or more switches. To Enable Switch Control go to: **Accessibility**→**Switch Control**→**Tap on**.



Switch Control highlights items and item groups one by one on the device screen. To make a selection, the user activates a switch when the desired item or item group is highlighted. When an individual item is selected scanning stops and a new control menu appears. This menu allows the user to choose a physical action to perform, including tap, scroll, press the Home button, perform a gesture (flick, drag, etc.), select a device operation (rotate screen, triple-click Home, etc.) and the option to access Switch Control settings.



Options for Switches include Screen (Tap anywhere on the screen), External adaptive switch (connected with Blue tooth or USB) and the Front-facing camera which allows the switch to be a head movement.

Assistive Touch

Assistive touch can be enabled by going to: **Accessibility**→**Assistive Touch**→**Tap on**. This will create a small gray square to appear on the user's screen. This square will remain faded on the screen in all applications. Tap the faded square and a menu pop appears on the screen with options such as favorites, Siri, Home button and Device. By tapping Device, another menu appears with Gestures, Shake, Screen shot and Multitasking.



Home-Click Speed

The Home-Click Speed feature allows the user to choose between the default, slow and slowest speed required when Double or Triple-clicking the Home button. To enable a preferred speed go to:

Accessibility→Home-click Speed→ choose desired speed.

Accessibility Shortcut

The accessibility shortcut allows you to turn accessibility features such as VoiceOver on or off without going into the menu every time.

1. Customize the accessibility shortcut by going to:
Settings→General→Accessibility→Accessibility shortcut.
2. Triple-click the home button on the device to enable and disable features quickly.

Program Manufacturer Contact Info

For more information about Apple accessibility on mobile devices, see the [Apple Accessibility Website \(http://www.apple.com/accessibility/ios/\)](http://www.apple.com/accessibility/ios/) .

To learn more about a specific Apple Device with iOS7 go to one of these websites.

[Information for iPad \(http://www.apple.com/ipad/\)](http://www.apple.com/ipad/)

[Information for iPhone\(http://www.apple.com/iphone/\)](http://www.apple.com/iphone/)

[Information on iPod \(http://www.apple.com/ipod/\)](http://www.apple.com/ipod/)